

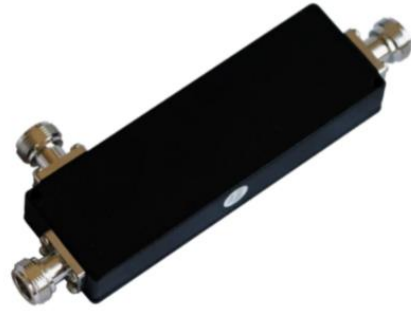
## PRODUCT SPECIFICATIONS

DIRECTIONAL COUPLER 698-2700MHz N-FEMALE

MODEL JRT-DIRCP10-0727-N300

Features:

- Low Insertion Loss
- High power handling
- Small size, low weight
- N-Female connector



SPECIFICATIONS	
FREQUENCY RANGE	698-2700MHz
COUPLING (dB)	10
INSERTION LOSS (dB)	≤0.8
IN-BAND RIPPLE (dB)	±1.0
VSWR	<1.25
DIRECTIVITY	≥20@10dB
PIM (IM3)	<-150dBc @+43dBm*2
POWER HANDLING	300W
IMPEDANCE	50Ω
CONNECTOR TYPE	N-Female
APPLICATION	IP65, Outdoor or Indoor
HUMIDITY	5 to 95%
OPERATING TEMPERATURE	-25 to +70°C
MATERIAL	Cavity: Aluminum; Connector: Copper
PROCESSING	Silver plated cavity and inner conductor
DIMENSION	159.4*63.2*16.5mm
WEIGHT	0.242Kg

### Dimension & Product Design:

